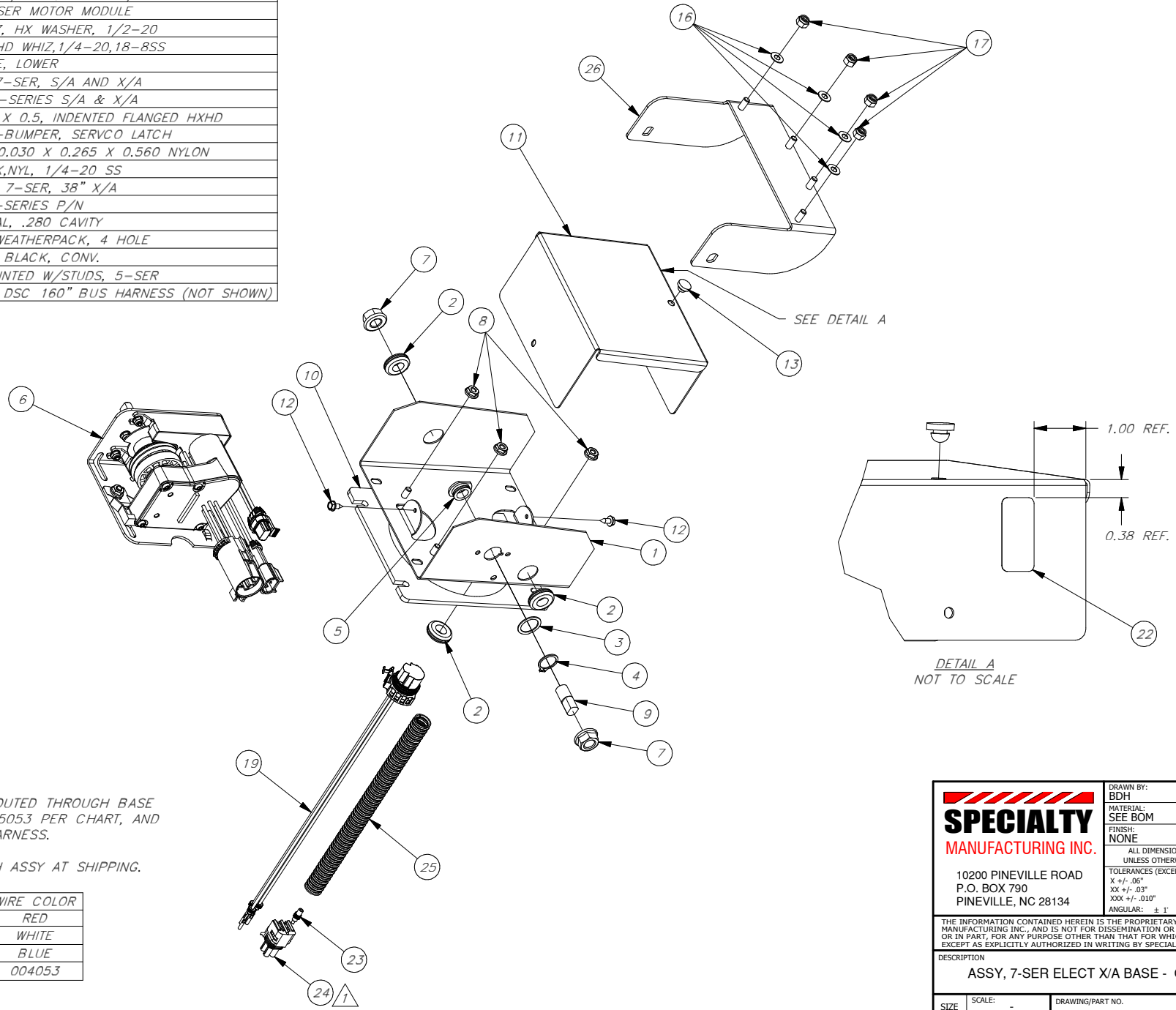


ITEM	QTY	PART NO.	DESCRIPTION
1	1	007101	BASE, 7-SERIES S/A & X/A
2	3	007027	GROMMET, 13/16" X 1/2", BLACK
3	1	005164	WASHER-1"ODX.765IDX.045TH,SS
4	1	005165	RING-SNAP, EXT, .750 SSTL
5	1	005176	BUSHING, 1/2" ID, NYLON W/TAB
6	1	007701	ASSY, 7-SER MOTOR MODULE
7	2	005122	NUT, WHIZ, HX WASHER, 1/2-20
8	3	005142	NUT-HX HD WHIZ,1/4-20,18-BSS
9	1	005057	PIN-HINGE, LOWER
10	1	002008	GASKET, 7-SER, S/A AND X/A
11	1	007125	COVER, 7-SERIES S/A & X/A
12	2	000137S	SCR #10 X 0.5, INDENTED FLANGED HXHD
13	1	T4262	GROMMET-BUMPER, SERVCO LATCH
16	4	000104	WASHER, 0.030 X 0.265 X 0.560 NYLON
17	4	000142	NUT-LOCK,NYL, 1/4-20 SS
19	1	007419	HARNESS, 7-SER, 38" X/A
22	1	007199	LABEL, 7-SERIES P/N
23	1	004053	PLUG, SEAL, .280 CAVITY
24	1	005053	PLUG - WEATHERPACK, 4 HOLE
25	2.5'	005013	LOOM - BLACK, CONV.
26	1	005168	HINGE-PAINTED W/STUDS, 5-SER
27	1	005037	ASSY, QK DSC 160" BUS HARNESS (NOT SHOWN)

REV	ECN NO.	DATE	BY	ZONE	NOTES
-	SA-09-0018	04/14/10	BDH	ALL	INITIAL RELEASE



- NOTES:**
- AFTER HARNESS IS ROUTED THROUGH BASE PLUG WIRES INTO 005053 PER CHART, AND APPLY 005013 TO HARNESS.
 - INCLUDE 005037 WITH ASSY AT SHIPPING.

SOCKET LOC.	WIRE COLOR
A	RED
B	WHITE
C	BLUE
D	004053

		DRAWN BY: BDH	DATE: 4/14/2010
		MATERIAL: SEE BOM	
SPECIALTY MANUFACTURING INC.		FINISH: NONE	
ALL DIMENSIONS IN INCHES UNLESS OTHERWISE INDICATED			
TOLERANCES (EXCEPT AS NOTED)			
10200 PINEVILLE ROAD		X +/- .06"	X +/- .152mm
P.O. BOX 790		XX +/- .03"	XX +/- .76mm
PINEVILLE, NC 28134		XXX +/- .010"	XXX +/- .25mm
ANGULAR: ± 1°			
THE INFORMATION CONTAINED HEREIN IS THE PROPRIETARY DATA OF SPECIALTY MANUFACTURING INC., AND IS NOT FOR DISSEMINATION OR DISCLOSURE IN WHOLE OR IN PART, FOR ANY PURPOSE OTHER THAN THAT FOR WHICH IT IS SUBMITTED, EXCEPT AS EXPLICITLY AUTHORIZED IN WRITING BY SPECIALTY MANUFACTURING INC.			
DESCRIPTION ASSY, 7-SER ELECT X/A BASE - QCK DISC			
SIZE C	SCALE: SHEET 1 OF 1	DRAWING/PART NO. 078106	REV. -